

SHELTER OF HOPE KENYA

ORGANIZATIONAL PROFILE



VISION

- **To have a well functioning and sustainable organization with modern facilities serving God and empowering the community.**



MISSION

- **To be a leading Christian-based organization in Kenya , restoring hope and transforming the lives of vulnerable persons by addressing their spiritual and material needs.**



CORE VALUES

- Prayer
- Commitment
- Integrity
- Accountability
- Compassion
- Excellence
- Team Work



PREVIEW

Shelter of Hope is faith-based organization registered under Kenya society act. Organization began on a humble note thirteen years ago with core objective of reaching out to the community through evangelistic ministry and feeding program targeting the less fortunate in Kiambiu, slums –Nairobi.

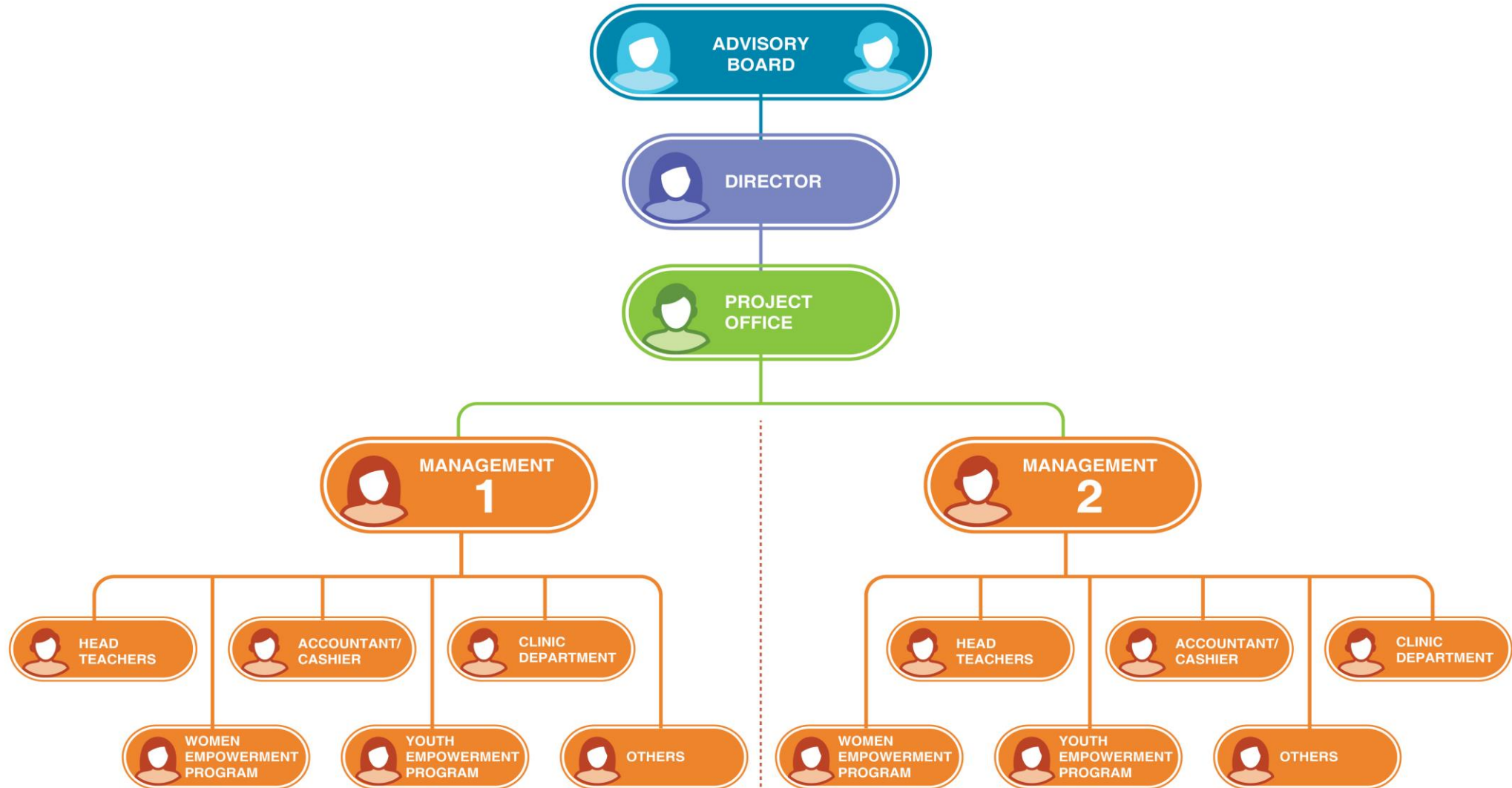
The organization has grown considerably since its beginning and currently runs its programs sites in; Kiambiu and Homa-bay- County.

- Currently we are reaching over 400 children.



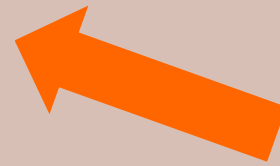
SHELTER OF HOPE
Bringing Hope, Transforming Lives

ORGANIZATIONAL STRUCTURE



WHAT WE DO

- **Child Sponsorship Program**
- **Education program**
- **Feeding program**
- **Youth Programs**
- **Emergency Relief For Community**
- **Agricultural Program**
- **Health Care Program**
- **Counselling and spiritual care**



1. CHILD SPONSORSHIP

- Started back way in 2014 with 20 vulnerable orphaned children. Currently we are in child number 85.
- The need is still more. You can partner with us by sponsoring a child.

How does it work?

- Through monthly financial commitment, prayer and letter writing



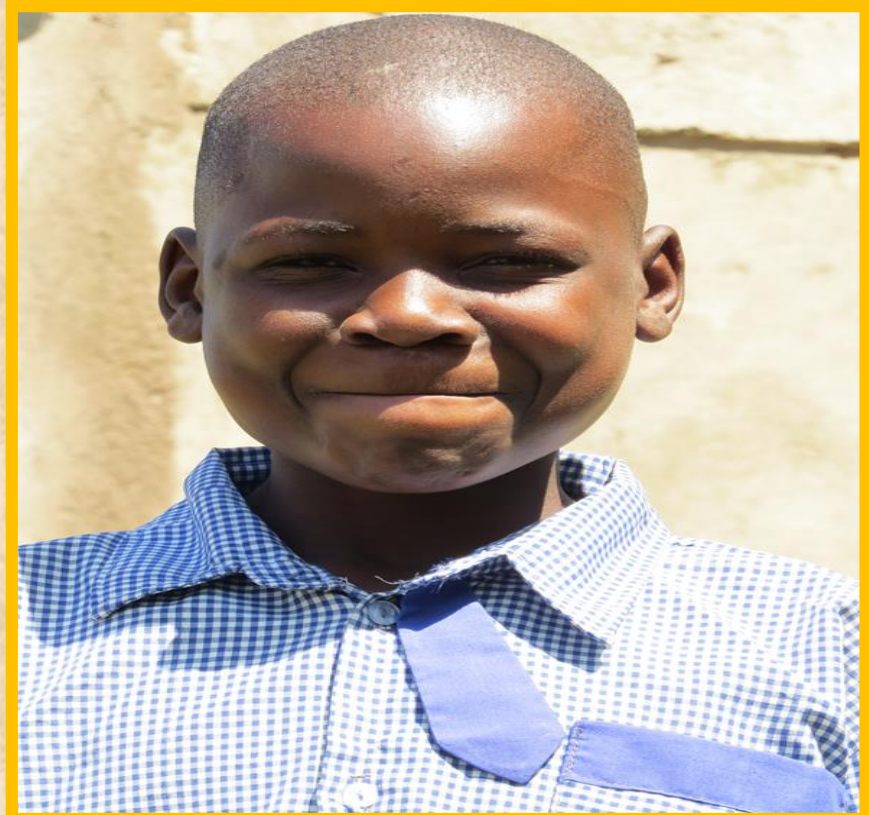
Brian Ochieng'

is a beneficiary of child sponsorship program



CHILD SPONSORSHIP BENEFICIARIES

Elizabeth pose for a photo after receiving a gift from her sponsor.



Samuel is one of the needy pupils who currently enjoys child sponsorship program.



2. EDUCATION PROGRAM



SOH-Kiambiu school



SOH-Kagan school

- **We offer complimentary education to our pupils in the two education centers.** The children supported under child sponsorship program are offered learning materials, school uniforms, boarding facilities, tuition fees, fed and offered life skills training.



3. FEEDING PROGRAM

- Hunger is a constant, chronic pain gnawing away at hungry children. Most children are living on the brink of famine that has affected their studies.
- While our children are in school we ensure they get food to enable them concentrate in their studies.



- The photos show our pupils taking their meals while at school.



4.SANITIZATION

- This is vital component in project; it gives an opportunity for awareness creation on cleanliness and reproductive health ,for self-assertiveness.



SOH-Kagan school



SOH-Kiambiu school



5. HEIFER PROJECT

- In this project a cow is lent to a widow who takes care until it gives birth then she remains with the heifer as a benefit



6. WOMEN CRAFT PROJECT

- Gives the women opportunity to save and offer affordable loans to members.



7.MORINGA PROJECT

- This is agribusiness for the women initiated in the year 2015. The women have been trained and exposed to Moringa nutritional value



8.MEDICAL CLINIC





Medical staff treats one of the villagers who had a chronic skin infection



9. MUSIC DEPARTMENT

- Shelter of Hope band restores and reforms the world through Gospel music. This project nurtures the talents of the young.



10.ANNUAL YOUTH CAMP

- This camp gather youths annually from various institutions in Kenya. The main vision is to ensure the youths are empowered and mentored for leadership.



11. MEDICAL CAMP

- Shelter of Hope Kenya through partnership of like minded organizations holds occasional free medical camp that intend to address general health education and provide free medical services



12. EMERGENCY RESPONSE

- Shelter Of Hope responds to emergency catastrophes in the society. These include drought, flood etc.



- Emergency food distribution to flood victims in Nyora, Migori county



CURRENT BUILDING PROJECT

- Building project for Shelter Of Hope school in Kagan is on. There is current need of funds to help finish the building.



**Building project in
its initial stages**



**Current state of the building
project**



Farm project

Why FARM PROJECT?

1. Shelter of Hope has experienced rapid increase in the beneficiary list of Child Sponsorship Program affecting the feeding component of the program
2. It Will help sustain feeding program
3. It Will result to food security and therefore increase the scope of child sponsorship beneficiary list.



WHAT HAS BEEN ACHIEVED SO FAR IN FARM PROJECT

- To help realize the bigger goal of the farm project, the organization has began from take off stage in small way due to limited funds. So far, the following has been done;

- ✓ Leased farm store to help keep farm inputs
- ✓ Fencing the farm to help in security
- ✓ Hired farm manager
- ✓ Purchased water pump and pressure pipes
- ✓ Other basic farm equipment such as sprayer pumps, wheelbarrow etc.
- ✓ Transplanting of pioneer seedlings done. These are Sukuma wiki, Onions and tomatoes.



Farm project in its initial stages of transplanting

LONG TERM PROJECTIONS

- Purchase land owned by Shelter of Hope for farming project
- The need for pick up or truck to transport farm produce to market



- Hire farm manager with excellent knowledge and skills in agribusiness
- Produce adequate yield enough for feeding the school population and selling the surplus produce



END

