

SHELTER



OF HOPE

RESTORING HOPE, TRANSFORMING LIVES



ERA OF A PANDEMIC

ANNUAL REPORT 2019/20



*‘Being happy because we can see the
brighter side of every situation’.*

**TABLE OF CONTENTS**

2.0	WHO WE ARE	4
3.0	OVERVIEW	5
4.0	EDITORIAL (WORDS FROM EXECUTIVE DIRECTORS)	6
5.0	DISASTERS AND EMERGENCY RELIEF	8
6.0	MEDICAL CLINIC & RESPONSE TO COVID-19	11
7.0	WOMEN EMPOWERMENT	13
8.0	SUSTAINABLE AGRICULTURAL PROJECT	14
9.0	EDUCATION PROGRAM	16
10.0	SPONSOR A CHILD	19
11.0	THE SCHOOL FEEDING PROGRAMME	20
12.0	THE COVID-19: EDUCATION RESPONSE & RECOVERY PLAN	21
13.0	RAY OF HOPE	22
14.0	YOUTHS & TEENS CAMP	23
15.0	INTERNATIONAL PARTNERS	24
16.0	THINKING AHEAD!	27

**CONTRIBUTORS:**

Fred Okumu - Chief Editor
John Calvince - Co- editor
Molline Ochieng' - Co - editor
Ishmael Ochieng' - Co- editor
Photography by Shelter Of Hope Kenya.

The Shelter of Hope Newsletter is a publication by the Shelter of Hope with support from sponsors.

The views expressed in this publication are not representative of the position of the sponsors. We are a nonprofit organisation committed to supporting the community.

All correspondence should be sent to:
SHELTER OF HOPE
P. O. Box 9277-00200 Nairobi - Kenya
E-mail: shelterofhopekenya2004@gmail.com

Materials and photos sent to us will be treated as unconditionally assigned for publication. Articles submitted for publication will however be subjected to the magazine's editorial policy.

2.0 WHO WE ARE

OUR VISION



A well-functioning and sustainable organization with modern facilities serving God and empowering the community.

OUR MISSION



To be a leading Christian-based organization in Kenya, restoring hope and transforming the lives of vulnerable persons by addressing their spiritual and material needs. We serve them with empathy, compassion and love in resemblance of Christ.

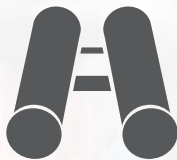
OUR CORE VALUES



- Prayer
- Integrity
- Accountability
- Compassion
- Team Work
- Commitment
- Excellence

3.0 OVERVIEW

Ishmael and his wife, Moline Ochieng, founded Shelter of Hope, Kenya, in 2005 after attending theological Bible school at GLO Zambia.



Shelter of Hope Kenya is a Christian-based non-profit making organization registered under the societies act in 2005. The organization began with an evangelistic ministry that involved sharing the Word of the Lord with the people and later to feeding the less fortunate from Kiambiu slums in Nairobi as well as supporting orphans.

Restoring hope and transforming lives to the despaired has been the driving factor of Shelter of Hope sixteen years down the line. From a humble beginning, of trusting God and sharing the little resources with the few orphans, needy children and widows in the support program, the organization has witnessed God's transformation in the two project sites: Kiambio slums and Kagan Village.

Currently, Shelter of Hope supports over four hundred beneficiaries - listed under Education Program.

The organization's scope of work involves: provision of complementary education, orphan sponsorship program, medical services, women empowerment programs, sustainable agricultural programs and youth programs. We also respond to emergencies and calamities.

Currently, Shelter of Hope supports over four hundred beneficiaries - listed under Education Program.

4.0 EDITORIAL (WORDS FROM EXECUTIVE DIRECTORS)

BRO. ISHMAEL OCHIENG'

When I look back to the past two years at shelter of Hope, I find myself sobbing because of what we have gone through but yet God was standing to prove who He is as God. When as a visioner, I thought everything was falling apart, God was there for us.

The biggest challenge that shook us was child sponsorship program that was dropped by the donors. I was wondering whether these children would continue with their education. Amidst these struggles, the serious pandemic ravaging the world's population struck. This got us in a real fix but I stand here to say God has been faithful to sustain us through that none of our children dropped out of school.

Amidst the fears and uncertainties, I am amused with the performance of the candidature class of 2020. The candidates who were perceived to be a bit weak emerged out victorious. None of them failed and all will secure a chance to join secondary learning in very good schools; glory be to Him forever.

These situations have taught me to remain faithful and I would love to take this opportunity to sincerely thank my dear wife for providing me with a strong shoulder to lean on. In addition, I would love to thank God so much for all our partners who stood with us during these hard times to make sure our programs did not stop. Special regards to our friend Brad Director MVC, Brother Grave Director MMN, UK and Brother Antonio from the Assembly in Italy.



SIS. MOLLINE OCHIENG'

God has been indeed faithful. We are living in times of uncertainties but the Lord God has been on our side. I am happy to report that amidst all these uncertainties, the going has been bearable. I appreciate my husband and all our partners for great support they have always accorded us. Please continue to pray for this great work that the Lord has put in our hearts.

I understand being crisis ready but even with my faith and experience, fear can still raise its ugly head and become a roadblock when you least expect it. Even the most prepared of us are, after all, still human.

As an organization we have had a great transition period. These transitions sometimes come with challenges but all the same we need to trust in the lord. The Lord has been in deed truthful.

As this work continue to expand, I pray that God to give us the right partners, staff and friends to help restore hope and transform the society we are reaching out to. Blessings!





*The generous will themselves be blessed,
for they share their food with the poor.
Proverbs 22:9*



5.0 DISASTERS AND EMERGENCY RELIEF

OUR RESPONSE: COVID-19 PANDEMIC

We live in unusual times, with much of the world in fear and turmoil. The corona Virus has nearly affected everyone across the globe. To date, daily reporting are made by government on the spread of the virus., some resulting in shocking interventions of curfew and lock-down measures.

It's a chaotic and stressful time. Poor families are in need of food and essentials to help them make it through the current crisis. During this time, Shelter of Hope (SoH) joins other relief organizations to put smile on the poor faces of Kenyans who cannot afford meal and other essential commodities. The government is overwhelmed and not all people can be reached with relief food, therefore, the interventions of SoH and other like-minded organizations can never be underestimated.

Through funds donation from our partner donor organizations many lives have been touched. As a Christian organization, every

need in the world is an OPEN DOOR to share God's love. That's why, as SoH family, we're responding to the COVID-19 (corona-virus) crisis, not by panicking or hiding out of fear, but by serving the people who are most vulnerable.

No matter how frustrating, confusing, or scary this crisis gets, with little resources, fear doesn't have the final say. 1 John 4:18 says, "There is no fear in love, but perfect love casts out fear." Our hope is built on the perfect love of Jesus Christ, so we've been called to share that love with the world. That's exactly the mission of SoH- restoring hope and transforming lives of Kenya communities who live in despair by addressing their spiritual and material needs.

Shelter of Hope Donates Cash and Food Commodities to Support COVID-19 Relief Efforts

The relief foods were purchased and packed in food baskets for easier distribution. Total of 800 households reached. By the grace of



God, we managed to reach out to people of Kagan village, Homa Bay County, Nyora village-Migori County and Kiambiu slums-Nairobi city. "If anyone has material possessions and sees his brother in need but has no pity on him, how can the love of God be in him? Dear children, let us not love with words or tongue but with actions and in truth." 1 John 3:17-18

Hope for Flood Victims - Nyora, Kadem, Migori County

In Migori County, over 300 families in Nyora village were displaced as River Migori and other streams broke their banks in heavy rains of May, 2020, the result was unbelievable. The raging water found its way into the houses, forcing people to seek refuge at a nearby Nyora primary school. The number rose day by day as more rains continued for several weeks.

"Across Nyora village, hundreds are worried about where their next meal will come from. They need

food now. People are vulnerable to water borne diseases due to flooding and too much rains. People are congested in school- used as temporary refugee camp, thereby, exposing themselves to risk of Covid-19 infection. The condition is just heartbreaking." Says Ishmael, Director SoH.

The suffering caused by flood was much evident, looking how people's houses were brought down by running water.

"My two-roomed mud house was swept away on last night. My children survived by a whisker." Narrates Atieno, flood victim, Nyora Chapel.

Heavy rains destroyed the roads, making them impassible, the villagers used canoe boats to access the nearby Sori town along the shores of Lake Victoria. To deliver the relief food baskets to flood victims, we worked through Nyora Chapel, an assembly associated with SoH, through the leaders who were well

briefed on distribution modalities. The food was purchased at Sori Market and delivered on canoe boats going through Lake Victoria and handed over to Nyora chapel leaders for distribution.

Kiambiu Slums Nairobi: SoH Connects with Poor during Pandemic

In Nairobi, SoH works in Kiambio slums, informal settlements. We implement activities in areas of education, food and nutrition, health, spiritual development and other livelihood activities.

During Covid-19 pandemic and with government health protocols on lock-down and curfew measures to contain the spread of virus, most people were rendered jobless. Livelihoods highly affected, people subjected to mental and physically suffering. Most need was food. SoH stepped in to share the little food bags with the needy.

Keep Praying

Despite our effort to share, the Gospel of Jesus Christ and relief food with the needy during the first wave of covid-19 period, many requests for food were still coming from across the remote villages and slum dwellers.

As a partner and friend, pray for;

- Peace and safety of vulnerable children who lost sponsorship due to COVID-19 economic instability.
- God's intervention to provide for those in need.
- God's protection of believers across the world



6.0 HEALTH: SHELTER OF HOPE MEDICAL CLINIC

Shelter of Hope Medical Clinic is doing great service to the community. The medical facility aims to make access to healthcare for both orphaned children at Shelter of Hope Academy and the community easy and affordable.

The primary beneficiaries are the less fortunate persons, community at large with illness concerns that need medical attention and a general wellness check-up.

The prevalence of common diseases such as malaria, typhoid, HIV/AIDS, Urinary tract infections, sexual transmission infection, pneumonia among others still remain challenge in rural areas. The condition is even worse for the poor in remote areas where access to essential human needs like shelter, food, and healthcare are still major problems.

It is estimated that 82% of health is lost to communicable diseases every year (World Health Organization, 2007). The figure is an indication of serious problems in healthcare sector that must consolidate participation of the government and non-governmental sector.

82%
*of health is lost
to communicable
diseases every year*

Evangelistic Outreach and Free Medical Camps.

Shelter of Hope in collaboration with local churches conducts free medical and evangelistic outreach very year. In the year 2020, it wasn't possible for us due to COVID-19 government rules on social gathering.

Shelter of Hope considers of the view, spiritual is part of health, not peripheral but core and central to it. Spiritual and health are bonded to each other, inseparable companion in the dance of joy and sadness, health and illness, birth and death.

The World Health Organization has made many statements describing the need for holistic care and the integral nature of this spiritual dimension.

“Until recently the health professions have largely followed a medical model, which seeks to treat patient by focusing on medicine and surgery, and gives less importance to beliefs and to faith. This reductionism or mechanistic view of patients has being only a material body is no longer satisfactory. Patients and physicians have begun to realize the value of elements such as faith, hope, and compassion in the healing process. The value of such spiritual in health and quality of life has led to the research in this field in an attempt to move towards

a more holistic view health that includes a non- material dimension, emphasizing the seamless connections between mind and body.” WHO 1998.

In today's world, a number of people suffer from high stress level leading to more diseases that are communicable. Sharing the word of God, through the promise of peace, joy, and happiness from Christ, alleviates the suffering of mankind, and so help the community served by shelter of hope Kenya. The free medical camp strives to treat the people and also heal their souls through Jesus Christ.

Medical Clinic & Response to COVID-19

On 11th March 2020, on the advice of the Emergency Committee, the WHO Director-General, declared the COVID-19 outbreak a Public Health Emergency of International Concern (PHEIC). The corona-virus disease 2019 (COVID-19) was declared a pandemic, which continues to evolve rapidly, with the number of countries affected in the WHO African Region steadily growing. Kenya confirmed its first case of COVID-19 on 13th March, 2020 and the cases have continued to steadily rise and spread across the country.

In response to this new health changes due to corona virus disease, Shelter of Hope Medical clinic developed COVID-19 emergency and Response plan in consultation with various government and non-government health actors. The plan aims to ensure well-coordinated approach to health matters with keen attention to community interest that promotes good health, safety and well-being of community members and all our project beneficiaries- orphans and vulnerable children.

This Emergency and Response plan is a good planning tool for Shelter of Hope Medical Clinic as it has guided our operations with regards to medical and non-drugs aids distribution.. The implementation of the plan began immediately when corona virus



Shelter of Hope
Clinic Laboratory



Shelter of Hope Medical clinic developed COVID-19 emergency and Response plan in consultation with various government and non-government health actors.

disease was declared as health emergency in Kenya and still continue to guide our operations despite the challenges due to low funding.

The COVID-19 pandemic has subjected the poor and the vulnerable to lots of suffering. People lack basic sanitary and hygienic items that can cushion them from virus. The government has been overwhelmed by rising needs of infected persons coupled by limited funds.

In our small effort to supplement the government, contain the virus, we initiated Community public awareness and sensitization.

Health talks focused on good personal health habits such as hand washing actions to keep COVID 19. The school children and local church congregations have been our key implementers. Public communication strategies including use of community health dialogue spearheaded by community health volunteers. Print media services such as posters, fliers have been used targeting all the residence of Kagan village and beyond.

We managed to procure and distribute through Shelter of Hope medical clinic face masks, face shields, goggles, and hand sanitizer, bags for medical waste or bio hazard.

7.0 WOMEN EMPOWERMENT

Shelter of Hope women project's aim it to restore hope and transform lives of women in the rural set up of Kagan village by addressing their socio-economic, cultural, and spiritual issues. The women empowerment project was started in November 2012. However, at the beginning the project had 15 members has currently grown to 30 members. The project creates platform where women can address some socio-cultural challenges affecting. These includes, domestic violence, reproductive health issues and women roles. The women project is managed by leaders who are trained on entrepreneurial skills under the patron of Mrs. Moline Ochieng'.

The Shelter of Hope Women Empowerment Project's major activities are;

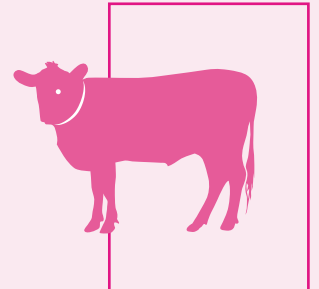


Table banking

Table banking gives the women opportunity to save and loan to members. Saving with the banking institutions has enabled members to acquire loans from the commercial banks, micro-finance institutions, and Government such as Equity Bank, Uwezo fund and Kenya Women Enterprise Fund (KWEF)

Cow project

Cow project is one of the economic activities under Shelter of Hope Women. It was initiated in 2014. The idea behind the project was to empower women economically by giving them an opportunity to create wealth, own and manage the project. Initially, during the first phase of the project, each member was given one cow. These cows were given identification number ranging from 1-30. However, the number of the cows has since doubled and majority of the members own at least two cows.



Moringa project



Moringa project is an agricultural activities of shelter Women group. The project was started in 2015 by all members after undergoing two days training. Moringa as a plant has an impressive range of medicinal uses with high nutritional value. Shelter of Hope Women extract moringa leaves to make products such as herbal soaps and moringa powder. Interestingly, moringa leaves can be used as vegetable.

Other projects

These include African handmade jewellery, basket weaving, tailoring, and rope making. Through the Grace of God, women have achieved a lot in terms of development. For instance, they have managed to build workshop where they conducts weekly meetings, trainings,/ workshops and store their handmade items. Trainings enables women to get management/ entrepreneurial skills.





8.0 SUSTAINABLE AGRICULTURAL PROJECT

Why Agriculture?

For a long time, Shelter of Hope has been trying to bridge the gap in financial deficit in its books of accounts. The commitments of the organization has been growing against declining funding inflows. There is a trend of donor fatigue worldwide and this has affected Shelter of Hope as well. It is under these circumstances that Shelter of Hope started on income generating activities that will complement the income receivable from the few donors remaining on board. Looking around, agricultural activity seems viable because of the availability of land, presence water for irrigation and growing market for the produce.

The farm will make food readily available for the orphans and needy children in our child sponsorship project. We grow crops like kales, onions, spinach, as well as maize. Also, we have established tree seedlings nursery whose idea is to complement the government of Kenya efforts in achieving forest cover of 10% by 2030. The seed-

lings are readily available for the local community to buy at affordable rates.

SoH adopts Farming God's Way (FGW)

Farming God's Way is an amazing Godly solution to the food security and poverty crisis for the rural poor. FGW is not just a technology but a well-balanced biblical, management and technological solution for the agricultural domain, equipping the poor to come out of poverty with what God has put in their hands and revealing the fullness of His promised abundant life. FGW was introduced 1984 by Brian Oldreive in Zimbabwe. Today, it has spread to many parts of Africa continent while also touching into Mexico, Nepal, USA, UK and others.

Shelter of Hope Staff trained on FGW;

Care of Creation Kenya, Kijabe

Care of Creation Kenya (CCK) is an evangelical mission organization dedicated to awakening churches, leaders, and communities to their re-



sponsibilities in creation care and environmental stewardship. CCK believe that Christians should work to bring people hope for today by healing and restoring the landscapes of Kenya.

The 5 staff from Shelter of Hope joined other participants for two days training at CCK Kijabe-Kenya. The training theme, “Transforming people and the land that sustains them.”

Objective of the training

To learn set of Biblical Principles that transform the practice of agriculture that brings transformation to all the farming communities in Kenya so that we might eliminate hunger and bring honour to God; the creator of the land, the soil, the crops, the trees, the birds and the animals.

Learning Areas Covered

- Honouring God in caring for His creation
- Cancer of the land- an environmental diagnosis
- Tree nursery establishment
- Grafting
- Bee keeping
- Well watered garden

FGW Training Outcomes

- To be disciplined farmers who put God at the Centre of agriculture.
- Farmer learns ways that God want Christians to respond to growing problems that are affecting His creation such as soil erosion, loss of biodiversity and agricultural decline.
- 14 principles in honouring Christ in Caring for His Creation. “All things were created by Him and for Him.” Colossians 1:16. Bible teaches, Christ is both the cornerstone of our faith and the cre-

ator of all things, therefore, He is the starting point when we talk about creation.

- Set of 16 principles on Godly agriculture that brings Glory to God and hope to the hungry; set of Biblical principles to transform the practice of Agriculture.

Training Impact and Implementation

The training was a taste of beautiful changes that needs to take place within the landscape of our world, and the benefits that such changes would provide to the poor. There was great sense of realization that we have been doing farming in conventional way as opposed to the recommended farming in God’s way. It’s important that these changes in farming dimension must be examined in the light of Biblical scriptures and Gospel itself.

Practically, we have started implementing the knowledge and skills we learned at Kijabe training within Shelter of Hope farms.

We are applying mulch “God’s blanket” cover in kales, onions, and tomatoes farming. Our maize farms are doing well as we apply the recommended organic manure to improve soil fertility.

Challenges

In order to realize the full potential of the farming vision, lots of funds are required to purchase the right tools and equipment. The growing need of feeding the vulnerable children and transforming agricultural practice in FGW calls for good farming investment. It’s our hope that the work we do will touch hearts to support the initiative.

The farm will make food readily available for the orphans and needy children in our child sponsorship project.



9.0 EDUCATION PROGRAM

Our Schools; Education for the Poor

“Education is the most important weapon which you can use to change the world.” Nelson Mandela



In areas where we work, many children are desperate for good education. Although primary education in Kenya is compulsory, it is not free. The state schools have many extra charges that are beyond the poor children. This results in

many children never attending school.

Shelter of Hope runs two education centres in Kiambio slums, Nairobi, and Kagan village within Homa Bay County. Both schools offers primary education. All our teachers are fully qualified, as our aim has always been to provide our children with the best standard of education possible! Both primary schools have a joint population of 500 children.

Both schools proud themselves as the centre of academic excellence. For instance, our kagan school for the first time in 2019 enrolled pioneer pupils for Kenya Certificate of Primary Education (KCPE). The pupils perfumed exceedingly well with top five students joining national high schools category. To the extent that our school came in first of all the other 50 schools - Upper Nyokal Zone- in 2019 KCPE results. The school attained mean grade of 340.82 out of 500 marks.

The education program is a vital component of Shelter of Hope in preparing children to be useful, productive adults in their home country of Kenya. We have mixed students with diverse backgrounds. It's our considered

opinion that poverty should not be hindrance to education.

Shelter of Hope established child sponsorship program in 2012. By the year 2016, 40 needy students had been enrolled in the program. The number rose to 86 students by the end of 2019. The child sponsorship was a true blessing to the organization as it enables meet our sustainability goals. However, the corona-virus pandemic came with bad news for us.

Fundraising During a Pandemic

As the year 2020 began, we had great plans in place to venture into marketing the child sponsorship program with Christian organizations worldwide. Then suddenly, the world closed COVID-19 hit and like everyone else, we were uncertain what things would be like. We kept optimistic in prayer, one month turned to two months, two months turned to three, and then we realized COVID-19 was not ceasing. We started to lose our monthly donors and were struck with the reality that our fundraising goals would not be met. By June, all donors of child sponsorship had pulled out. What a shock! At this time we were not sure whether we would have enough funds to pay our staff who well struggling with life at home.

Like most non-profit making organization, we had to think of other means of fundraising. But as we tried to come up with ideas, the rules kept on changing. No physical gathering were allowed. Virtual meetings became the new norm, something we are never used.

We ventured into growing of crops and tree nursery. We realized youths were at home and idle, therefore we engaged them in our farms. The farming yielded good surplus that we sold to get income for sustainability.



Shelter of Hope runs two education centres in Kiambio slums, Nairobi, and Kagan village within Homa Bay County. Both schools offers primary education.



*Top: Kiambiu school, Nairobi
Left: Kagan pupils, Homa-bay*

We have continued to pay staff salaries. Working staff are paid full salaries. Staff members who are not in school are paid, receive 80% of their salary.

Also, we would love to thank all our partners who donated during tough times of COVID-19. Every month you sacrifice and without you, our dependable donor base, Shelter of Hope would not be where it is today. Thanks to ALL OF YOU who donated to Shelter of Hope. Even through a pandemic, HOPE still shines because of you.

On behalf of the children, my heart overflows with gratitude towards those 87 sponsors who, sacrificed to support and pray for the children. May god reward all your struggles? You helped us in a big way raise funds to educate Kenyan children till where you left them.



*We need sponsors right now
to support children of
all ages at school.*

*More details on our website
www.shelterofhopekenya.co.ke*



“You will be enriched in every way so that you can be generous on every occasion, and through us your generosity will result in thanksgiving to God. ... And in their prayers for you their hearts will go out to you, because of the surpassing grace God has given you.”

2 Corinthians 9:10-15

10.0 SPONSOR A CHILD

TRANSFORM THE LIFE OF A CHILD!

At Shelter of Hope, we believe that every child deserves strong foundation- the very best chance for successful future. However, many children here in Kenya and all over the world aren't getting the opportunity to achieve their full potential. Some aren't in school and often struggle to find the basic essentials - their lives and future at risk. These are God's children you can help change their life. If you sponsor a child, then you will give them the precious gift of a brighter future.

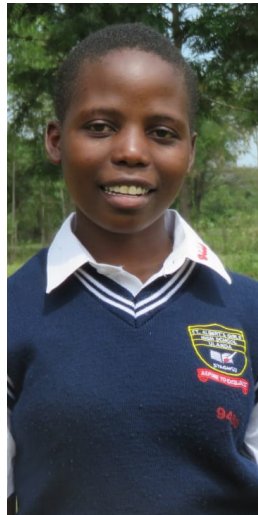
Why sponsor with us?

Education Focused

We believe education is one of the keys for a child to break out of the cycle of poverty and to fulfill their potential in this world. We focus on preschool, primary school, and secondary school programs, as well as programs that help children remove the barriers that prevent them from receiving an education.

Relationship Focused

We believe a sponsor can help the children in a community by building a lasting relationship that can be a bridge to faith, hope, and transformation - for both the child and sponsor. We encourage our sponsors to visit their sponsored child - an experience that will certainly be life changing for you both! Short-term mission trips are available through our partners.



Inset: Emma, an orphan, who was a beneficiary of Shelter Of Hope Orphan sponsorship program scored 386 marks out of 500 in her KCPE exams. She was admitted to Ulanda Girls National school where she has continued to perform exceptionally. From her form one exams results 2020/2021, she has emerged position two.

Customized Programs

We create customized programs to provide children with a path to education. Sometimes, there are barriers that need to be removed first so we also focus first on the basic needs of the child so that he or she has food, clothing, shelter, adult care, a secure place to live, healthcare and Christ centred guidance.

Duties for other not-for-profits, focusing on both the sponsor and the child experiences.

How to Get Involved?

A potential sponsor identifies a child to sponsor by going to:

www.shelterofhopekenya.co.ke.

After identifying a child to sponsor, commit \$35 monthly to our general account. The funds will give your sponsored child access to life-changing benefits, like medical care, educational support, spiritual mentorship, nutrition support and life skills training.

It's All about Building Relationship

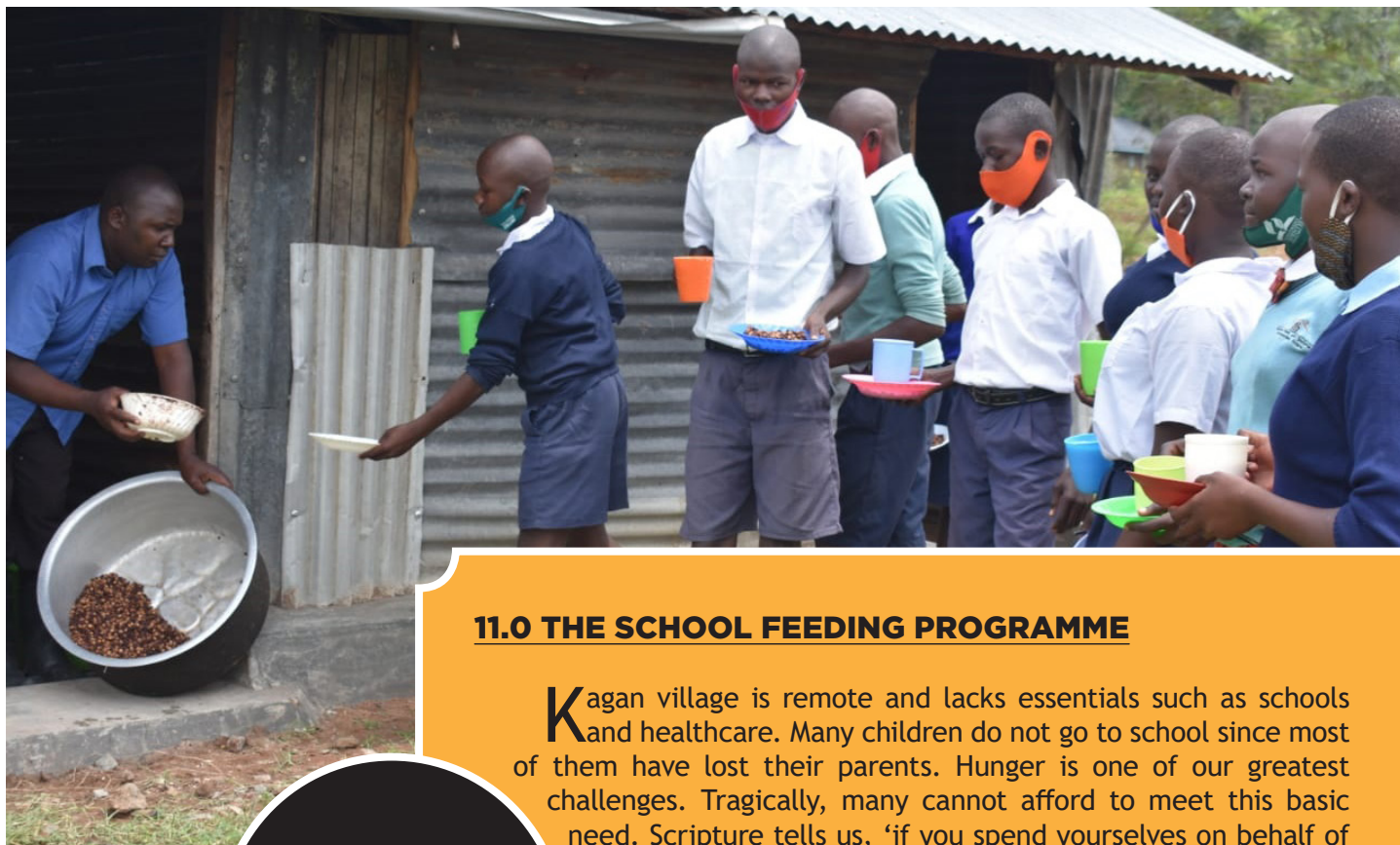
As a sponsor, you will be able to see your impact first-hand through letters and photos from your child.

Do you remember how you felt as a child when you received a letter or card in the post? All children love to receive letters, cards, and photos from their sponsors. It build their self-esteem and confidence because they know someone is thinking about them.

We encourage all sponsors to write to their sponsored child. It's a great way to follow their progress, learn about each other's lives, establish, and develop a lasting friendship.



Shelter of Hope pioneer candidates in their respective high school uniforms.



11.0 THE SCHOOL FEEDING PROGRAMME

Kagan village is remote and lacks essentials such as schools and healthcare. Many children do not go to school since most of them have lost their parents. Hunger is one of our greatest challenges. Tragically, many cannot afford to meet this basic need. Scripture tells us, ‘if you spend yourselves on behalf of the hungry and satisfy the needs of the oppressed, then your light will rise in the darkness, and your night will become like the noonday’ (Isa. 58:10).

The school feeding programme helps meet the nutritional needs of orphans and vulnerable schoolchildren. The students in day care are provided with two meals a day and those in the boarding programme receive three meals a day. When possible, we extend help to needy widows and the elderly. In supporting their material and spiritual needs, the children are lifted up to see their potential. They consider Shelter of Hope as family. Help support this noble course by praying for the children or donating food.

Challenges

The year 2020 wasn't easy for Shelter of Hope organization. The financial uncertainty due to cut in donor funding hampered the provision of key services such as paying of staff salaries, buying of food for the vulnerable children.

Digital Learning

The school shut-down by government due to COVID-19 brought learning to stand still as the school could not afford virtual learning. Digital learning materials such as computers and projectors for effective implementation of competency based curriculum (CBC). The CBC system requires more of digital projection during classroom learning. A program already enrolled in government schools. Lack of the digital learning tools is threatening effective curriculum delivery.

*‘if you spend
yourselves on behalf
of the hungry and
satisfy the needs of
the oppressed, then
your light will rise in
the darkness, and your
night will become like
the noonday’
(Isa. 58:10)*

12.0 THE COVID-19: EDUCATION RESPONSE & RECOVERY PLAN



To ensure that the COVID-19 Response and Recovery plan and related activities are implemented, the estimated amount of USD 250,400 is prayed for.



Shelter of Hope strives to provide education to the less privileged children with minimal interruptions despite the effects of COVID 19. We have a clear vision of providing quality, equitable and inclusive learning services. A major barrier to these aspiration is the occurrence of sudden pandemics like corona virus diseases that has disrupted people's livelihood and learning.

During crisis, the health, safety and well-being of learners and teachers is priority and even a slight disruption of the education system may lead to loss of education gains particularly in the implementation of the new competency based curriculum.

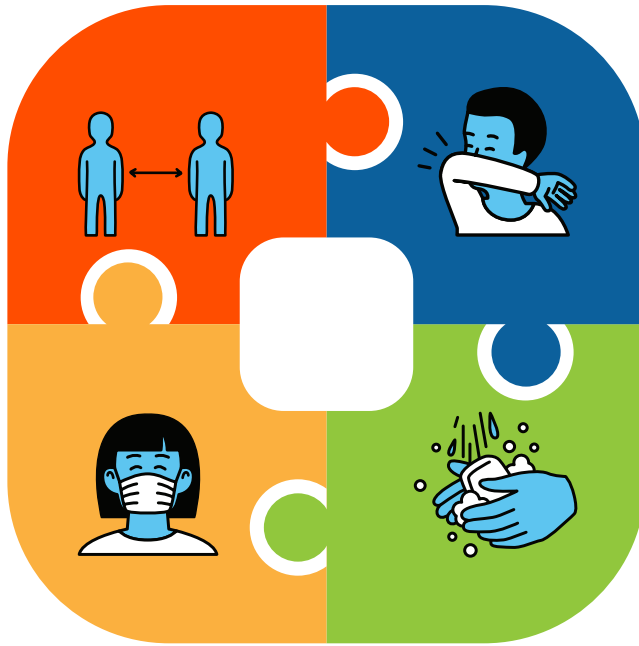
To address this, Shelter of Hope has developed the COVID-19 contingency plan to help in smooth continuation of learning process amid corona virus challenges. This Response and Recovery plan is a good tool for Shelter of Hope Academy. The implementation of the plan began October 2020. The end will end when corona virus disease is declared free and organization operations back to normalcy.

The plan offers the following objectives; Preventing the spread of COVID-19 and provide access to quality, equitable and inclusive education to learners and teachers, providing psychosocial support to learners, teachers and school management board, Identifying financial needs of the organization to meet recurrent expenditure including feeding program for vulnerable children School, maintenance and improvement.

To achieve the stated objectives, the institution will implement the following interventions: Meet the basic needs of the children under our care (books, school uniforms, medical care, sanitary and hygiene items), school maintenance and improvement, provide psychosocial support to learners and teachers, ensure full enrolment of all learners once school opens, school feeding programme, spiritual mentorship, seek for child sponsorship for needy children and proper coordination with Ministry of Education.

To ensure that the COVID-19 Response and Recovery plan and related activities are implemented, the estimated amount of USD 250,400 is prayed for. Therefore, we call upon partners and friends of good will to pray with us and support the implementation of the plan.





*Shelter of Hope Academy,
has taken all the WHO
recommended precautions
with masks and social
distancing.*

13.0 RAY OF HOPE

Back to School During COVID-19

God continues to be our source of strength for every challenge and our refuge in times of trouble. And as always, keeping the children in our program safe and healthy is our top priority.

Since the pandemic hit March 2020, many countries around the world were forced to isolate and shut down. This, of course, also meant shutting down schools. Many countries were able to find ways to still help the students learn by offering online solutions and some were able to create lesson plans for the students to pick up and take home, but nothing is the same as learning in a classroom.

For us, online learning was not possible with our students as we could not afford the cost. Around October 2020, when the number of COVID -19 spread was reducing, the government ordered reopening of school that was to be done in phases in strict adherence to health protocols. Only grade four and eight were allowed to report back to school for two months going to December 2020.

We were pleased and excited to have our students back to school just like it happened around the world! Just like here at Shelter of Hope Academy, many schools were taking precautions with masks and social distancing. One thing were for sure though; the students were excited to see each other and were excited to learn!

If you are interested in helping a student through their education, consider sponsoring a child!

You may visit our website www.shelterofhope.or.ke today!

14.0 YOUTHS & TEENS CAMP

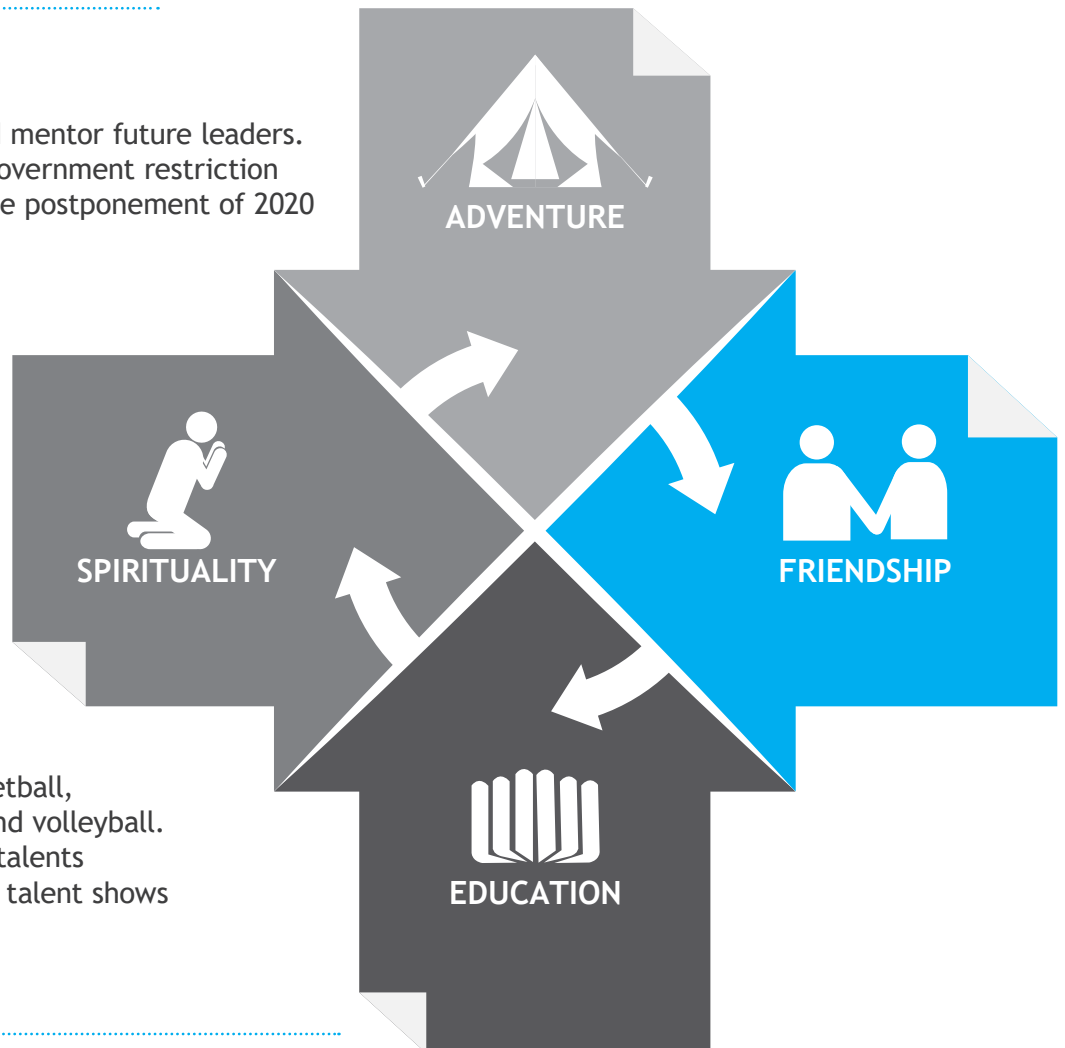
Annual youths and teens camp is one of the activities for the youths and teens in Shelter of Hope youth programs. The desire is to see youths and teens grow to become responsible people who fear and obey the Lord. The youths and Teens camp led by youth leader, John Calvins, and assisted by Fredrick gathers around ninety youths and teens from age 12 to 35 from the various churches that work with Shelter of Hope.

Youth Mentorship

The vision is to empower and mentor future leaders. The covid-19 pandemic and government restriction on church gathering led to the postponement of 2020 camp meeting.

During our annual youths and teens fellowship, we usually have exciting activities which are groups friendly.

Camp activities include basketball, football, high ropes, hiking and volleyball. Other activities of nurturing talents include dancing competition, talent shows among many activities.



The campers also go out on adventure trips. Bible discussions not only in classes, but in dorm meetings, as well as question and answer sessions.

At the end of the camp, the campers are usually issued with participation certificate signed by Matron Moline Ochieng' and the patron Ishmael Ochieng'.

Pray

Pray for the upcoming Annual Youths and Teens camp planned for December 2021. Host site will be Nairobi, Kenya.



15.0 INTERNATIONAL PARTNERS

Mr. Grave's Message

Medical Missionary News (MMN) is all about making Jesus known through the provision of health-care services. Medicine is a great way of connecting with people by seeking to alleviate sickness, disease and suffering, as millions of people across the world have little or no access to basic healthcare.

This follows the example of Jesus who showed love for those in need in a very practical way and used the opportunity to share the good news that He forgives sin and brings reconciliation with God forever. We are connected with over 50 projects based across 30 countries in Africa, Asia, Eastern Europe and Latin America. All of these projects are run by Christians who want to reach out to their local communities with the love of Jesus and are using the provision of healthcare services as the way of connecting with them.

One such partner is Shelter of Hope who we have been connected with for a number of years who are seeking to provide basic health care to their local communities through the clinics that have been set up. MMN has been able to provide some funds to help establish these and clinics and help keep them running.

In addition, we have been able to support these medical camps that are run each year from one of the clinics where primary health checks are carried out, community health education is shared and the gospel of the Lord Jesus is presented. Our partnership is deeper than just being a funder.

MMN seek to share what is going on with the health-care ministry of Shelter of Hope with our supporter base in the UK and we include regular prayer needs in our weekly update so that more people are praying for God to work in Kenya through ministry of Shelter of Hope.

It is a great privilege to be able to be a part of this ministry and seek peoples' lives transform through receiving medical care they could not afford and meeting with the Lord Jesus Christ.

ImpactHope

Impact Hope has been proud to partner with Shelter of Hope Kenya since 2018. Through our connections with Visions Ministries Canada, we grew to understand the great needs they have been meeting in their communities through education, training, counselling, food relief, medical care, and more.

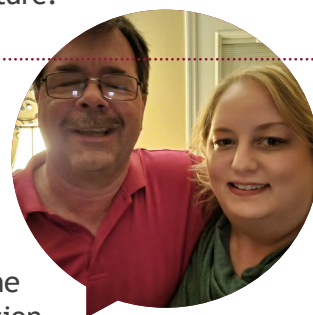
ImpactHope has been exceptionally thrilled to be working with them in developing their Shelter of Hope Academy campuses in Nairobi and Kagan which provides exceptional elementary education; small teacher to student ratios, food and medical care, biblical teaching, boarding services, high academic expectations and discipline. Their dedication to their teachers as a priority to building a strong classroom has been noticed by Kenyan government officials through the high marks students achieve on their government exams. ImpactHope is privileged to work in partnership with Ishmael and Moline at Shelter of Hope in order to ensure the ongoing success. ImpactHope is seeking new investors who want to change lives for the future! Donations for children's education and other areas of the ministry of Shelter of Hope can be received at <https://impacthope.ca/shelterofhope/>. Invest in education for a child, you will certainly change the future!

Monica and Randy Hoff

Randy & Monica are excited to partner with Shelter of Hope. We are looking forward to one day, with the Lord's guidance and provision, to work with Ishmael & Moline

Ochieng in this journey. Monica and I have been married for 32 years and we have 4 daughters, 4 son-in-laws and 9 grandchildren with another on the way. We raised our girls to love the Lord Jesus and raised them in a Brethren Assembly where they came to know the Lord and are all saved. We also are business owners in the Heating, Air Conditioning and Ventilation business for 20+ years.

The Lord has blessed us immensely as well. Please pray for the Lord's blessing upon this new adventure that we can successfully see it through. In His Name.



Olli F. Olschewski and Helen Kuhn-Olschewski, K3 Schwelm, Germany

For many years, the free evangelical church K3 Schwelm in Germany supports the work of Shelter of Hope, Kenya. In 2007, Shelter of Hope was introduced to our church by a couple who met Ishmael Ochieng' Okuku at the "International Brethren Conference on Mission" (IBCM) at Wiedenest, Germany. Hans-Jochen and Minni Timmerbeil were touched by the loving heart of Ishmael for the poor and underprivileged Kenyans so that they started to support Ishmael in his work.

Now Shelter of Hope has become an official mission partner of K3 Schwelm. We are amazed by the versatile blessings which Shelter of Hope willingly passes on to the community.

As we favour their core values (prayer, integrity, accountability, compassion, teamwork, commitment, excellence), we are impressed by the results of those values put into practice. Our hearts are filled with joy as we see the life-changing work of Jesus, especially in the lives of orphans and widows.

Shelter of Hope is truly what its name says: SHELTER for the most vulnerable people in Nairobi and Kagan and HOPE for the hopeless through the great mercy which we received as a LIVING HOPE through the resurrection of Jesus Christ from the dead. (1 Peter 1, 3)



Bro. Antonio Bisceglia Message

My name is Antonio Bisceglia and I am an energy engineer. I am Italian, born and raised in Rome. Between December and February 2020 I traveled with a group of students and researchers in East Africa. During my trip, in February, I visited the organization Shelter of Hope, led by Brother Ishmael and sister Molline. I visited the school in a Kiambiu, the slum located in Nairobi.

The slum is a place full of needs. There is no sewage system, there are no paved roads and the houses are small and built mainly of metal sheets and other waste materials. During the day, the metal sheets over heat, forcing the people who live inside to go outside.

Unfortunately, the situation outside their homes is worse. There is rubbish and animals everywhere, there is little food and water and not everyone can afford a decent meal.

In this context, it is very difficult to live a dignified life and it's impossible to have hope for better life.

Here is where Shelter of Hope built a school. The school is also made mainly of metal sheets but looks much neater than neighboring houses. It is regularly attended by many children.

When I entered in the school, I was greeted warmly and I went personally in each classroom to meet the teachers and the staff working inside school. Everyone is smiling, welcoming and kind. You can see that they work hard to provide the children with a descent education. The children are also happy to be at school. I spoke to some of them and they confessed to me that they want to become doctors, lawyers and engineers when they grow up. These ambitions may sound out of place given the context in which they live, but this shows how they work of all those who work for the school in fundamental and above all effective. They succeeded in giving these children hope for a better future.

For the many children who attend the school, it is a light in the darkness, a hope where it seems impossible to imagine a better life.

Of course, there are a lot of needs here. The organization shelter of hope successfully provide the best education support to the children and teenagers, but their future



16.0 THINKING AHEAD

Shelter of Hope is in the process of implementing its strategic plan developed four years ago. This strategic plan laid down the organizations roadmap for future plan.

Despite financial constraints, the organization has been able to place strong foundations for its work in the project sites; both Kagan and Kiambio.

Key Flagship projects

Classroom construction project

The plan to develop modern classroom block is in line with the organization vision statement.



The building project is a two storey block consisting of eight classrooms; four on each floor. Phase one of the building is complete which consists of laying ground work, brick walling and roofing.

The phase two of the building which consists of plastering, tilling, and painting has stalled for almost year due to lack of funds. It's our prayer that the Lord will provide funds for its completion.

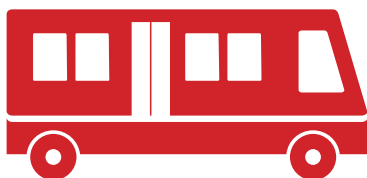
For the safety of the learning children, the ministry of education regulation requires good building infrastructure. According to the Education Act (Cap 211) and Public Health Act, (Cap 242) the classrooms should be safe, appropriate, adequate, and properly constructed, devoid of any risks to users or those around them.

There is urgent need to complete phase two of the building to accommodate the rising number of children occasioned by social distance rule when schools open during COVID-19 era.

Help raise funds for this noble course.

School Transport System - Kagan School

Over the past two years, both schools have witnessed tremendous growth in school population. The idea of school bus has been one of the best option of economic sustainability of the school. It's a viable project that will aim to target long distance students - in the paying option category- who will keep the school going.



Availability of a bus will spur the growth of school. Because school has reputation of good performance, many parents from long distance are willing to bring their kids but are hindered by lack of transport system. The idea of attracting high number of paying students will boast the income status of the school.

This will reduce over reliance on donor funding.
A mini bus 33- seater cost about **USD 70,000**.
Pray with us.



THINKING AHEAD >>

How to Support us;



Sponsor a child through our PayPal account.
Click <https://www.paypal.com/donate/> in our website to donate.



Choose the child to support in our website by clicking www.shelterofhopekenya.or.ke



Volunteer to teach, counsel or feed our pupils



Donate clothes to the orphaned children and widows



Volunteer to train teens and youths during their annual camps.



Volunteer to partner with the work. You can support the farm project, building project etc.



Network with us



☎ +254 020 2664 664 | +254 725 830 020

✉ P. O. Box 9277 00200, Nairobi – Kenya

✉ shelterofhopekenya@gmail.com / ishmaelchng097@gmail.com

f Shelter Of Hope Kenya

🌐 www.shelterofhopekenya.or.ke